

Writing Tableau reports

Data Visualization

Gilbert Mfitundinda

DBA-Compassion International

BSIT Graduate

Founder: [Love restoration](#)

Partner: [Maelearn Community](#)

<https://www.linkedin.com/in/gmfitundinda>

@Gmfitundinda

[Tel:7196008785](tel:7196008785)

mfitundinda.gilbert@gmail.com

Data Visualization

Data that DBA's manage has to have a business impact.

What is Data Visualization and why is it needed?

1. Significance of data through visual context
2. Its a display of patterns, trends and correlations.
3. It's a Multi-faceted view of data that explore every bit of its dimension.

For this to be possible DBA'S may work with Business Intelligence guys and often have to involve the use of Data Visualization Tools and Software's.

Popular BI Tools

- Tableau
- Microsoft Power BI
- Domo
- Fusion Charts
- Data Hero

Data | **Analytics**

Summarize

- Constant Line
- Average Line
- Median with Quartiles
- Box Plot
- Totals

Model

- Average with 95% CI
- Trend Line
- Forecast

Custom

- Reference Line
- Reference Band
- Distribution Band
- Box Plot

Pages

Columns: SUM(Sales)

Rows: SUM(Profit)

Filters

- Action (Region)
- YEAR(Order Date)
- Segment
- Category

Marks

Automatic

Color | Size | Label

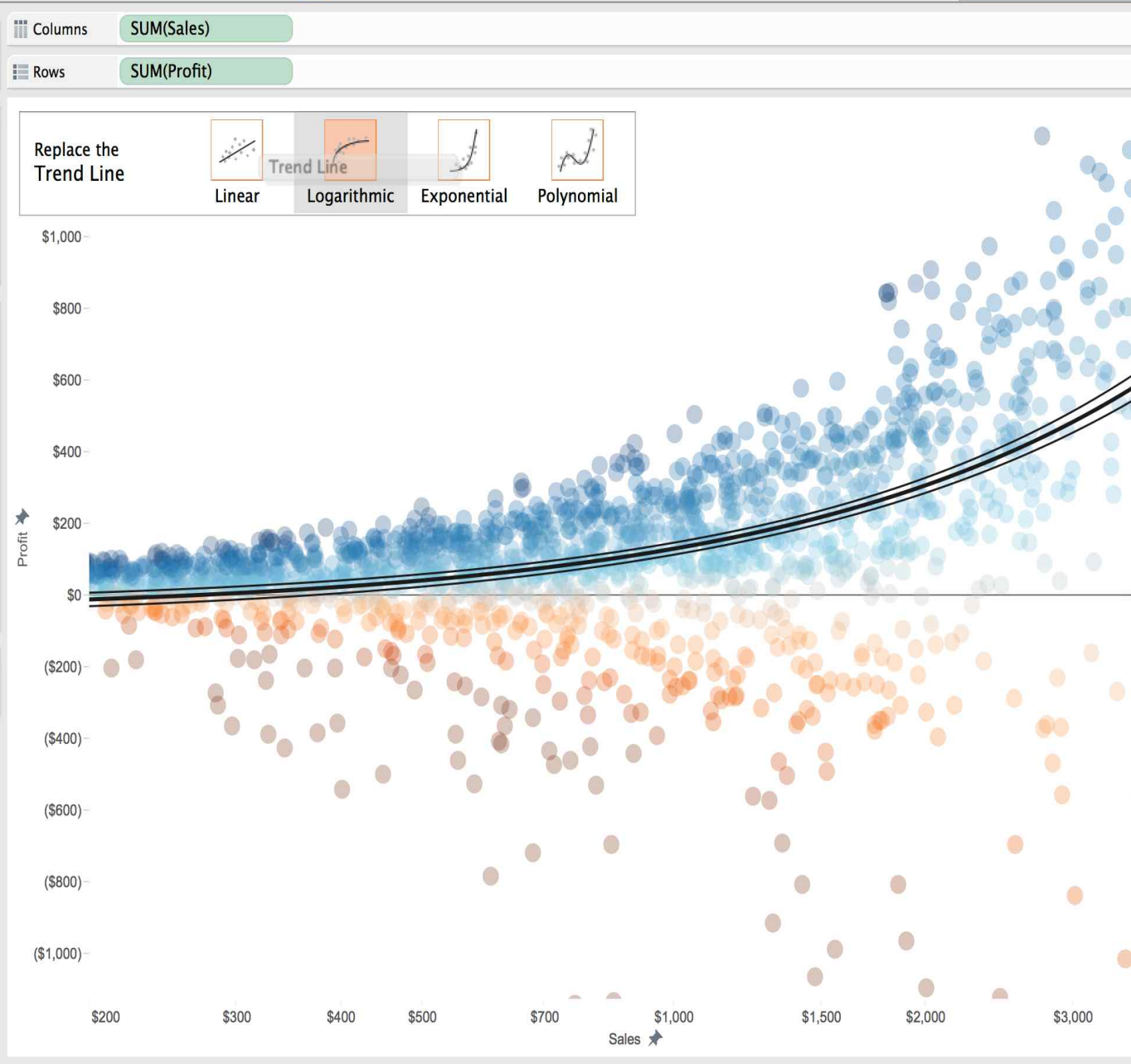
Detail | Tooltip | Shape

AGG(Profit Ratio)

Customer Name

Region

AGG(Profit Ratio) color scale: -50.0% to 50.0%

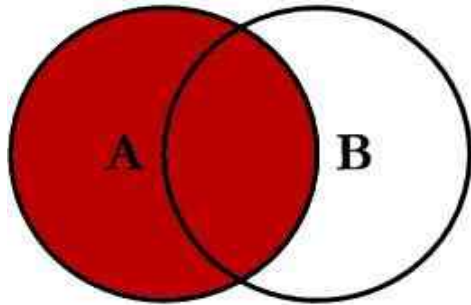


Why Tableau

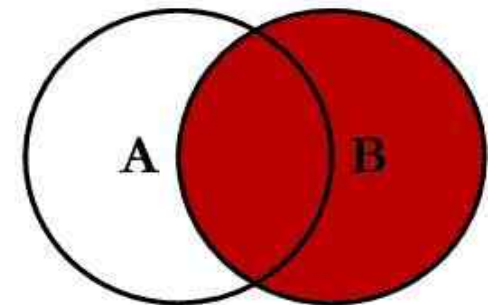


- Several data sources (MSSQL Server, MySQL, Oracle, IBMDB2)
- An intuitive BI that is easy for anyone
- Visual analytics prepared in seconds.
- About drag and drop; no technological know how may be needed. It writes a query as one drags and drops.
- Allows you gain insights from data quicker using Visuals.
- View/Work Sheets
- You can add multiple sheets into a dashboards
- Filters are a better way of grouping, flexible features
- One-click access to any data you need to analyze (Scalability)

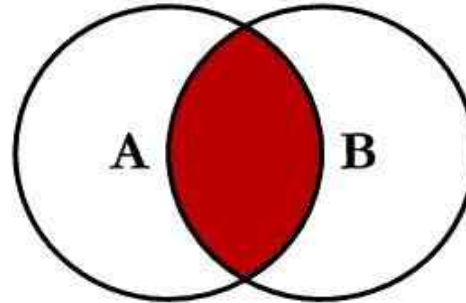
SQL JOINS



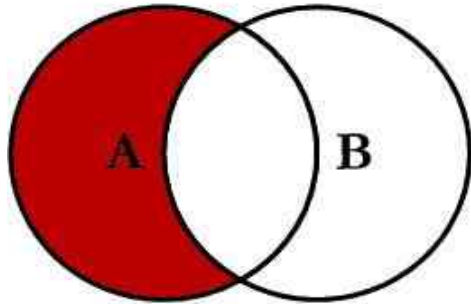
```
SELECT <select_list>  
FROM TableA A  
LEFT JOIN TableB B  
ON A.Key = B.Key
```



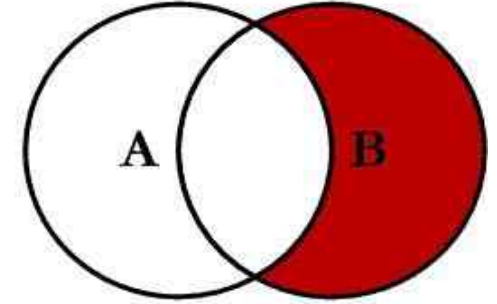
```
SELECT <select_list>  
FROM TableA A  
RIGHT JOIN TableB B  
ON A.Key = B.Key
```



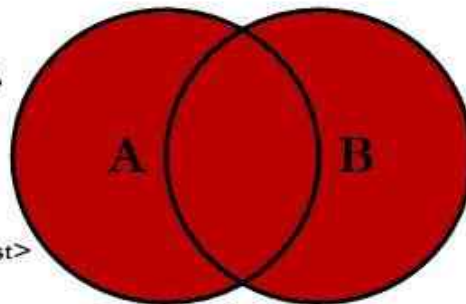
```
SELECT <select_list>  
FROM TableA A  
INNER JOIN TableB B  
ON A.Key = B.Key
```



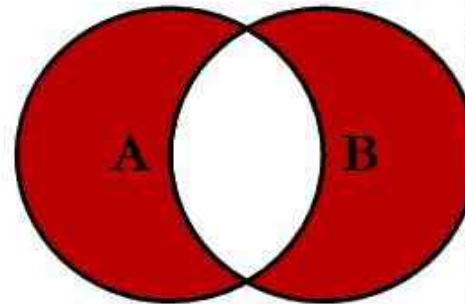
```
SELECT <select_list>  
FROM TableA A  
LEFT JOIN TableB B  
ON A.Key = B.Key  
WHERE B.Key IS NULL
```



```
SELECT <select_list>  
FROM TableA A  
RIGHT JOIN TableB B  
ON A.Key = B.Key  
WHERE A.Key IS NULL
```



```
SELECT <select_list>  
FROM TableA A  
FULL OUTER JOIN TableB B  
ON A.Key = B.Key
```



```
SELECT <select_list>  
FROM TableA A  
FULL OUTER JOIN TableB B  
ON A.Key = B.Key  
WHERE A.Key IS NULL  
OR B.Key IS NULL
```

Tableau Products

- Tableau Desktop (Explore, analyze, and visualize)
- Tableau Server (Share, collaborate, and govern securely at scale)
- Tableau online (Access and edit from anywhere)
- Tableau Public

- Demo

Questions??

Gilbert Mfitundinda

DBA-Compassion International

BSIT Graduate

Founder: Love restoration

Partner: Maelearn Community

[@Gmfitundinda](https://www.linkedin.com/in/gmfitundinda)

Tel:7196008785

mfitundinda.gilbert@gmail.com